

SEK-18 SV FE TYPA 16P PL3 BULK UT

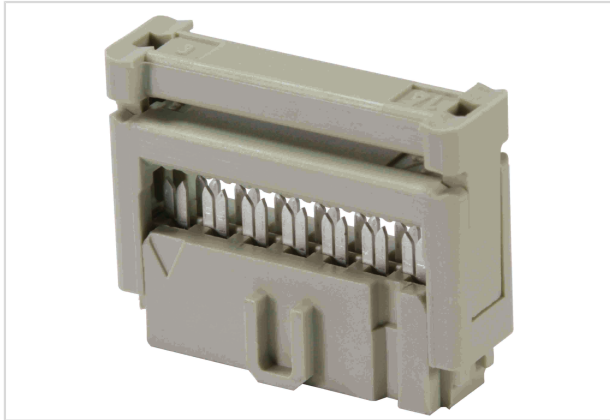


Image is for illustration purposes only. Please refer to product description.

Part number	09 18 516 7803 58U
Specification	SEK-18 SV FE TYPA 16P PL3 BULK UT
HARTING eCatalogue	https://b2b.harting.com/0918516780358U

Identification

Category	Connectors
Series	SEK
Element	Female connector

Version

Connection type	PCB to cable
Number of contacts	16
Performance level	3
Details	for IDC flat cable 1.27 mm (0.050") pitch AWG 28/7 - AWG 26/7
Pack contents	5000 pieces

Technical characteristics

Contact rows	2
Contact spacing (termination side)	2.54 mm
Contact spacing (mating side)	1.27 mm
Rated current	2.5 A
Insulation resistance	$>10^9 \Omega$
Contact resistance	$\leq 20 \text{ m}\Omega$
Limiting temperature	-55 ... +125 °C
Insertion and withdrawal force	$\leq 48 \text{ N}$
Mating cycles	≥ 50
Test voltage $U_{r.m.s.}$	1 kV



Pushing Performance

Technical characteristics

Isolation group	IIIa (175 ≤ CTI < 400)
-----------------	------------------------

Material properties

Material (insert)	Thermoplastic resin (PBT)
Colour (insert)	Grey
Material (contacts)	Copper alloy
Surface (contacts)	Sn over Ni Termination side Au over Ni Mating side
Material flammability class acc. to UL 94	V-0
RoHS	compliant
ELV status	compliant
China RoHS	e
REACH Annex XVII substances	No
REACH ANNEX XIV substances	No
REACH SVHC substances	No

Specifications and approvals

Specifications	IEC 60603-13
UL / CSA	UL 1977 ECBT2.E102079 CSA-C22.2 No. 182.3 ECBT8.E102079
Railway classification	F3/I3

Commercial data

Packaging size	5,000
Net weight	2.28 g
Country of origin	Romania
European customs tariff number	85366990
eCl@ss	27440309 Cable connector for printed circuit board



Pushing Performance

Current carrying capacity

The current carrying capacity of the connectors is limited by the thermal load capability of the contact element material including the connections and the insulating parts. The derating curve is therefore valid for currents which flow constantly (non-intermittent) through each contact element of the connector evenly, without exceeding the allowed maximum temperature.

Measuring and testing techniques acc. to IEC 60512-5-2



- ① Temperature raise
- ② Derating curve
- ③ Derating curve 80%